

COMPANY PROFILE

M A N I N G A
ENGINEERING

**LEADERS IN INNOVATIVE
ENGINEERING EXCELLENCE**

OUR VISION

**“A professional team delivering
creative project solutions.”**

OUR MISSION

Maninga Engineering's guiding principles for continuous improvement, which ultimately achieves quality products and services are:



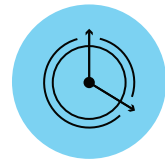
Delivery of quality
services by our
skilled employees



Pursue growth
through innovative
solutions



Frugal
management of
client funds and
budgets



Effective
management
of timelines and
milestones

We also believe that exceptional quality comes from exceptional management.

State of the art technology is crucial in ensuring that tasks are performed efficiently and effectively. Therefore, we invested our time and substantial amount of capital in honing our business strategy to use the latest technology possible in our design and construction.

OUR VALUES

A company without values will always inevitably cease to exist. At Maninga Engineering we take this very seriously and ensure that the following forms part of our daily operational procedures. The values by which we operate and be known include:

• **Integrity and honesty** • **Trust** • **Openness and transparency** • **Passion** • **Pro-activeness**

Satisfied Clients • **Sustainable Business** • **Staff growth and team work**

A culture of learning is encouraged where both employer and employee commit to growing the skills and abilities of individual employees

When our clients do business with Maninga Engineering they can be rest assured that our values are always at the forefront in the way we conduct business.

ABOUT MANINGA

Maninga Engineering was established in 2016/2017 and has gained significant momentum and grown at a steady pace over a relatively short period of time.

Maninga Engineering was founded on a number of core principles, the first being the value of the heritage of family grounded individuals. Secondly, the company prides itself in doing business differently – they challenge the status quo in the engineering space particularly in the field of mechanical engineering. This has been the strength of Maninga Engineering who have set themselves apart from the rest. They have carved the way for a better industry through their innovative use of 7D technology -making them leaders in their field.

Maninga has been instrumental in bringing in change to the sector. One of the pillars of the company's success has been the Mentorship and In-Service Training Programme. Young engineers are given proper guidance in terms of their careers. They are led through the programme and developed towards their professional registration with the Engineering Council of South Africa. Supervision and mentorship are provided in line with and guided by ECSA guidelines and relevant to the specific voluntary association.



Sikhulile Nhassengo, Director Maninga Engineering, is a self-motivated individual with a sound academic background combined with significant experience in the engineering and supply chain industry. His experience covers the commercial, industrial, petrochemical and processing sectors, with extensive expertise in design and construction management. He holds a Master of Technology in Mechanical Engineering from the Durban University of Technology as well as Master of Business Administration (MBA) from the University of Kwa-Zulu Natal (UKZN).

COMPANY GROWTH

FOUNDED

Maninga Engineering begin their first design job in the oil and gas sector with SCE Engineering and Engen

SIVEST

Maninga Engineering became part of SIVEST supplier development programme

CESA

Maninga Engineering was admitted to CESA

2016

2018

2019

2020

2021

2022

Maninga Engineering was accepted to the SAB Foundation Tholoana Programme under the Fetola

SAB Foundation

Maninga Engineering was ISO9001:2015 certified

ISO

Winners at the CESA Aon Engineering Excellence Awards, in the category: Engineering Technology and Innovation, HVAC Building System Design Excellence, for the Commerce, Law and Management (CLM) Building Development project

Award

Leaders in Innovative Engineering Excellence.

Maninga Engineering's foundation has been built on the following pillars of strength

Excellence

Cost and Time

Risk and Quality

In an ever-changing environment, the importance of adaption and change is more pertinent than ever, whilst maintaining excellence. Maninga Engineering have made it part of their business ethos to ensure that the company offers client's leading quality services using innovative technology.

B-BBEE

Maninga Engineering is committed to meeting B-BBEE objectives at all levels of the organization, whilst maintaining excellence in the delivery of services to Clients. We are a level 1 BBEE providing highly diversified, integrated services in engineering, project management, construction and installations. The company supports BBEE, by sourcing all critical skills from black owned companies. Maninga Engineering has two female owned business in their value chain.

ISO: 9001 2015 Certification

Maninga Engineering achieved ISO: 9001 2015 certification in 2020. This certification strengthens the company's ability to consistently provide products and services that meet customer and applicable statutory and regulatory requirements and aims to enhance customer satisfaction through the effective application of the system, including processes for improvement of the system and the assurance of conformity to customer and applicable statutory and regulatory requirements.

Sustainability

Maninga Engineering runs its operations in line with the ISO 9001:2015 Quality Management System. Process flows are defined for all stages of work undertaken. This includes a three-stage approval process that is followed whereby the designer/author is responsible for the first sign-off, followed by the reviewer and then the final approval. All documents include these three check points.

Enabling Compliance Obligations and Legislations

Amongst other compliance obligations, the following minimum guiding legislation are always adhered to when conducting business:

- The Occupational Health and Safety Act Standard Act 85 of 93
- Basic Conditions of Employment Act
- Projects Specific Standards and General Engineering Principles
- Engineering Profession Act, 2000, (Act No.46 of 2000)

Our service offering is very focused and direct – we operate in a handful of industries in which we provide services which is precise and accuracy. At Maninga we strive to perform an array of services while maintaining predefined quality standards to ensure that a project is implemented and completed professionally.

Industrial Services

- Structural, Mechanical, Electrical, Instrumentation & Piping
- Pressure Equipment
- Storage Tank
- Pump Station Design

Building Services – Mechanical

- Wet Services
- Heating Ventilation Air Conditioning
- Fire Protection and Detection and Medical Gas
- Elevator – Lift equipment

Building Services – Electrical

- Electrical Supply,
- Electricity Centre,
- Main Distribution,
- Power Distribution Services,
- Lighting Services,
- Transport Services and
- Protective Services.

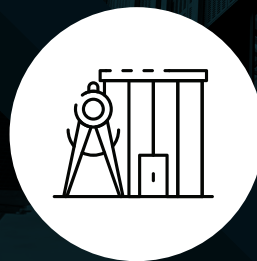
Project Management

- Programme Management
- Construction Management,
- Risk Management

INDUSTRIES THAT MANINGA ENGINEERING OPERATES IN



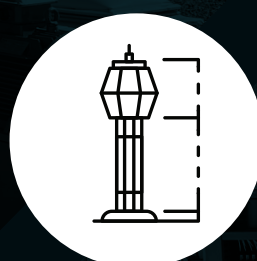
Petrochemical
Infrastructure



Industrial and
Building Services



Healthcare
Infrastructure



Water
Infrastructure

COMPANY EXPERIENCE | BUILDING SERVICES PROJECTS

BIDVEST FACILITIES MANAGEMENT

Project Name: Absa Towers North and PTA
Campus waterproofing

Services: This appointment is for construction supervision for Absa Towers North and PTA Campus waterproofing.

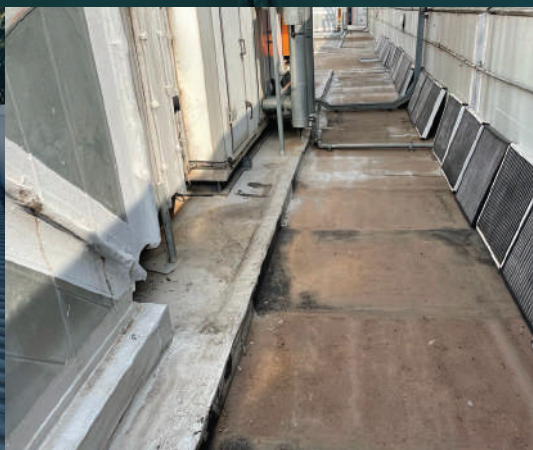
Disciplines: Civil and Structural Engineering

Project Value: R583 749.77

02/2022 - CURRENT



BIDVEST FACILITIES MANAGEMENT
Absa Towers North & Absa Pretoria Campus (Site Inspection Pictures)



UNIVERSITY OF THE WITWATERSRAND

Project Name: Chris Hani Baragwanath Academic
Hospital (CHBAH) Burns Unit Extension

Services: The Appointment of Mechanical Engineering
Consultants (HVAC, Medical Gas, Lift)

Disciplines: Mechanical Engineering HVAC, Medical Gas

Project Value: R11 200 000.00

11/2021 - CURRENT



UNIVERSITY OF THE WITWATERSRAND - Chris Hani Baragwanath Academic Hospital
(CHBAH) Burns Unit Extension (Site Inspection Pictures)



UNIVERSITY OF THE WITWATERSRAND - Chris Hani Baragwanath Academic Hospital (CHBAH) Burns Unit Extension (Site Inspection Pictures)

NATIONAL HEALTH LABORATORY SERVICES

Project Name: Block D Officer and Laboratory Facilities

Services: Professional Services for The HVAC Design and Project Management For Block D Office and Laboratory Facilities. Finalizing the Detailed Design and Drawings, Bill of Quantities and Specifications Up to Advertising Tender

Disciplines: Mechanical, Electrical, Civil

Project Value: R1 980 000

11/2017 - 12/2021



NATIONAL HEALTH LABORATORY SERVICES (NHLS) - Block D Officer and Laboratory Facilities Airflow Measurement (Project Close-Out)



PRO-SERVE CONSULTING

Project Name: Tahiti Sands Hotel Refurbishment

Services: The Appointment of Mechanical Engineering Consultants (HVAC, Fire & Wet Services) & Electrical/Electronic Engineering Consultants.

Disciplines: Mechanical Engineering, Electrical Engineering

Project Value: R 7 664 825

06/2021 – 12/2021



PRO-SERVE CONSULTING - Tahiti Sands Hotel Refurbishment

KABORONA INVESTMENT

Project Name: Power Park Student Accommodation.

Services: This appointment was for Mechanical HVAC, Wet Services, Fire Protection and Project Management Services for Students Housing Conversions and Social Housing Projects

Disciplines: Mechanical (Fire, Wet Services and HVAC), Electrical Engineering

Project Value: R 34 045 717

11/2019 – 02/2022



BIDVEST FACILITIES MANAGEMENT
Absa Towers North & Absa Pretoria Campus (Site Inspection Pictures)



UNIVERSITY OF THE WITWATERSRAND

Project Name: Mechanical Engineering Professional Services (Mechanical HVAC)

Services: This appointment is for Framework contract for Mechanical Engineering Professional Services within the University of the Witwatersrand precincts (3 years).

Projects:

1. Wits Dissection Hall – Air cooled chillers with fan coil units.
Project Value: R 10 000 000 | **10/2020 – 09/2021**

2. Wits Commerce Law Management Building – Radiant Heating and Cooling – Thermal Active Building System – (TABS)
Project Value: R 4 350 000 | **06/2020 – 12/2021**

3. CLM Building HVAC – Air Cooled Chiller with Chilled Beam unit
Project Value: R 3 900 000 | **06/2020 – 12/2021**



UNIVERSITY OF THE WITWATERSRAND - CLM Building & Wits Dissection Hall (Close-out Pictures)





OKUBABAYO – SIVEST

Project Name: Atchar Process Plant

Services: This appointment was for a concept design for Atchar plant in Germiston Packaging.

Disciplines: Fire Protection, HVAC

Project Value: R5 000 000

07/2020 - CURRENT



ATCHAR PROCESS PLANT (Site Inspection Pictures)

COMPANY EXPERIENCE | INDUSTRIAL SECTOR PROJECTS

SHELL WITBANK TERMINAL

Project Name: Power Park Student Accommodation.

Services: This appointment was for Mechanical HVAC, Wet Services, Fire Protection and Project Management Services for Students Housing Conversions and Social Housing Projects

Disciplines: Mechanical (Fire, Wet Services and HVAC), Electrical Engineering

Project Value: R 34 045 717

11/2019 – 02/2022



SHELL WITBANK TERMINAL (Installation Pictures)



CAREER DEVELOPMENT

MANINGA ENGINEERING EMPLOYS PROFESSIONALS IN THE FOLLOWING FIELDS:



Engineering

(Mechanical, Instrumentation,
Electrical, Civil and Structural)



Project Management

We have exciting career opportunities

It is the policy of Maninga Engineering to encourage and assist employees in the furthering of their education and development, in order to promote their long-term career paths within the company. Mentorship is provided to Engineering Candidates, in terms of the ECSA requirements towards professional registration, and other professional candidates in terms of their specific discipline toward professional registration. A culture of learning is encouraged where both employer and employee commit to continuous growth in skills and abilities of all employees.

Mentorship and In-Service Training

Junior engineers require proper guidance in terms of their careers, in preparation towards professional registration with the Engineering Council of South Africa. Supervision and mentorship is provided in line with ECSA guidelines and relevant to the specific voluntary association.

Our Alliances & Partners

Good partnerships are vital in the engineering field. Our partners and alliances are ultimately the building blocks to safe, sustainable business whereby our clients can also have the necessary security and guarantee that their project is being looked at holistically to find an all-encompassing best solution.

Company Professional Memberships

Maninga Engineering is a member of the following organisations:





CONTACT US

Gauteng (Head Office)

Building 32, 4 Peltier Drive, Sunninghill Office Park

Tel: +27 (0) 11 234 2089

E-mail: sikhulile@maninga.co.za | admin@maninga.co.za

Website: www.maningaengineering.co.za

